

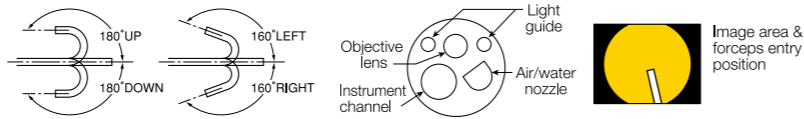
Specification, Accessories

EI-580BT

"Short" Double-Balloon Endoscope



Specification	
Field of view	140°
Observation range	2-100mm
Bending capability	Up 180° / Down 180° Right 160° / Left 160°
Working length	1,550mm
Total length	1,850mm
Distal end diameter	9.4mm
Flexible portion diameter	9.3mm
Instrument channel diameter	3.2mm
Control portion & Connector	G7 & Conventional Connector



Product name: Video Endoscope
GMDN: 36112
Generic name: Flexible video duodenoscope

Valves for G7 control portion



Distal end hood



Tube kit



TS-13101 Over-tube

The over-tube ensures stable positioning of the endoscope inside the intestinal tracts.

Specification		
Model name	Over-tube TS-13101	Balloon BS-2/4
Material of balloon	Natural Rubber	BS-2: Natural Rubber BS-4: Silicone Rubber
Dimensions	Outer diameter 13.2mm Total length 1,050mm	Outer diameter 35mm



TS-13101
Product name: Over-tube
GMDN: 46687
Generic name: Endotherapy overtube, single-use

BS-2
Product name: Endoscopic accessory
GMDN: 45712
Generic name: Gastrointestinal balloon catheter

BS-4
Product name: Balloon
GMDN: 45712
Generic name: Gastrointestinal balloon catheter

PB-30 Balloon controller

To be used to control the pressures inside the balloons. Balloons are inflated and deflated during ERCP.

Specification	
Power	AC100 to 240V 50/60Hz 0.8A
Maximum flow rate of pump	170ml±50ml/10sec
Dimensions	140(W) x 170(H) x 410(D)mm
Weight	7kg(Main unit), 0.4kg(Remote switch)



Product name: Balloon controller
GMDN: 46662
Generic name: Catheter-balloon inflator, reusable

"Short" Double-Balloon Endoscope EI-580BT



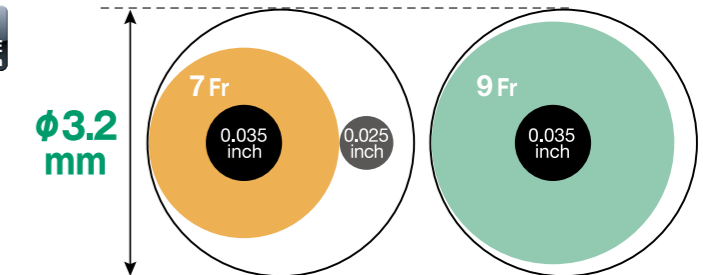
A Paradigm Shift in Biliary Interventions for post surgical anatomy with “Short” Double Balloon Endoscope

EI-580BT, the newly developed “short” Double Balloon Endoscope (sDBE), is engineered to overcome technically challenging therapeutic ERCP procedures in patients with surgically altered anatomy such as Roux-en-Y reconstruction or hepaticojejunostomy anastomosis.

The “short” Double Balloon Endoscope’s length of 155cm is optimum in such treatment; it provides compatibility with most of standard ERCP devices as well as superior maneuverability for smoother insertion in complex anatomy. FUJIFILM has brought less invasive endoscopic interventions to the another level with this new sDBE.

3.2mm Instrument Channel

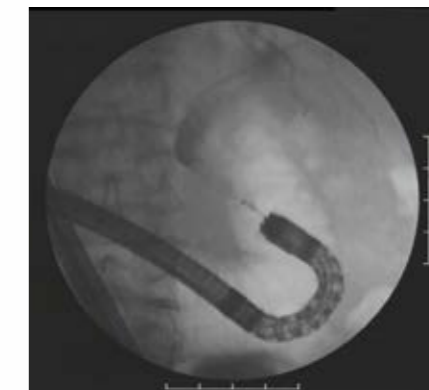
The larger instrument channel offers wider variety of procedural options, smoother device insertion and better suction ability for efficient treatment.



Small Turning Radius

EI-580BT assists precise access to target point with its improved angle maneuverability.

- Increases effect of jiggling and shaking technique in advancing in the altered anatomy.
- Realizes stable coaxial alignment of device tip and bile duct without elevator function.

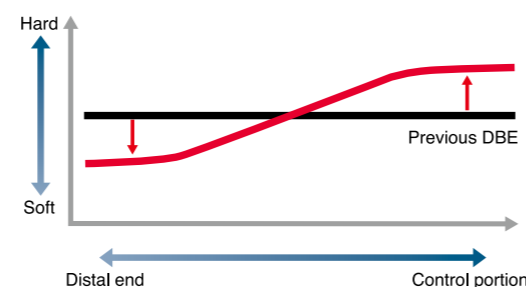


Improved flexible portion

With the newly developed flexible portion as well as two balloons, EI-580BT is designed to assist smooth insertion in complex reconstructed intestine.

Advanced Force Transmission

- Enhances procedural control in looped position, allowing stable scope maneuverability with responsive torque.
- Better transmits pushing force even in tortuous anatomy.



Adaptive Bending

- Enables easy insertion into the afferent limb with the soft flexible end portion.
- Supports deeper insertion even through post surgical adhesions of the intestinal tracts.

